

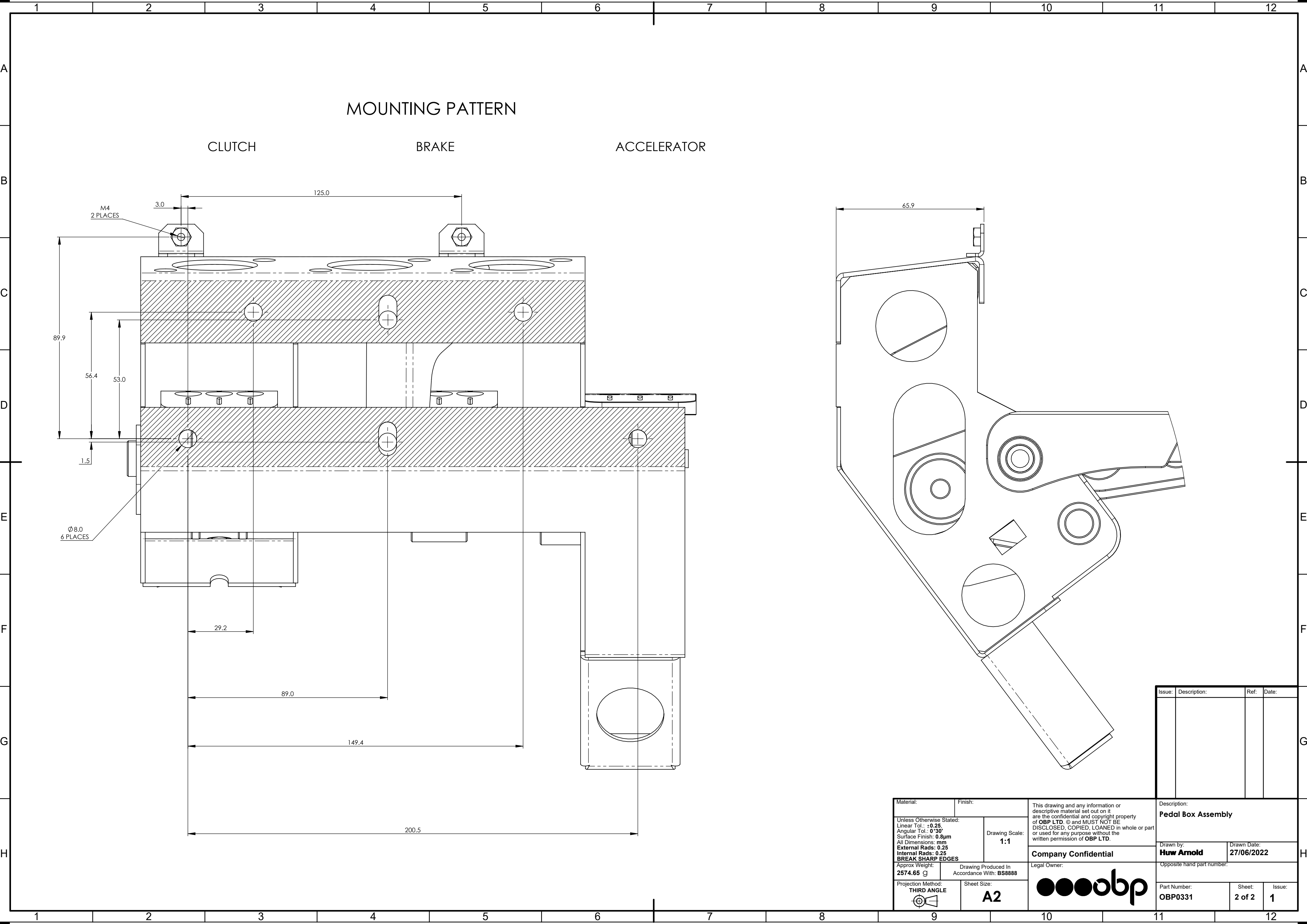


Issue:	Description:	Ref:	Date:
01	First Issue	##	27/06/2022

Material:		Finish:		This drawing and any information or descriptive material set out on it are the confidential and copyright property of OBP LTD. © and MUST NOT BE DISCLOSED, COPIED, LOANED in whole or part or used for any purpose without the written permission of OBP LTD.		Description:	
Unless Otherwise Stated: Linear Tol.: ±0.25 Angular Tol.: 0°30' Surface Finish: 0.8µm All Dimensions: mm External Rads: 0.25 Internal Rads: 0.25 BREAK SHARP EDGES		Drawing Scale: 1:2				Pedal Box Assembly	
Company Confidential		Legal Owner:				Drawn by: Huw Arnold	
Approx Weight: 2574.65 g		Drawing Produced In Accordance With: BS8888		Opposite hand part number:		Drawn Date: 27/06/2022	
Projection Method: THIRD ANGLE 		Sheet Size: A2				Part Number: OBP0331	
						Sheet: 1 of 2	
						Issue: 1	



MOUNTING PATTERN

CLUTCH

BRAKE

ACCELERATOR

Issue:	Description:	Ref:	Date:

Material: Unless Otherwise Stated: Linear Tol.: ±0.25 Angular Tol.: 0°30' Surface Finish: 0.8µm All Dimensions: mm External Rads: 0.25 Internal Rads: 0.25 BREAK SHARP EDGES		Finish: Drawing Scale: 1:1		This drawing and any information or descriptive material set out on it are the confidential and copyright property of OBP LTD. © and MUST NOT BE DISCLOSED, COPIED, LOANED in whole or part or used for any purpose without the written permission of OBP LTD.	
Approx Weight: 2574.65 g		Drawing Produced In Accordance With: BS8888		Legal Owner: obp	
Projection Method: THIRD ANGLE 		Sheet Size: A2		Description: Pedal Box Assembly	
				Drawn by: Huw Arnold	Drawn Date: 27/06/2022
				Opposite hand part number:	
				Part Number: OBP0331	Sheet: 2 of 2 Issue: 1