

Accelerator Cable (Ball Type) Fitting Instructions

Dot punch the pedal where you want the cable to fit.



Drill a hole the size of the nipple $\frac{3}{4}$ of the way through the pedal end.

Now cut a slot in the pedal so the slot joins the hole.





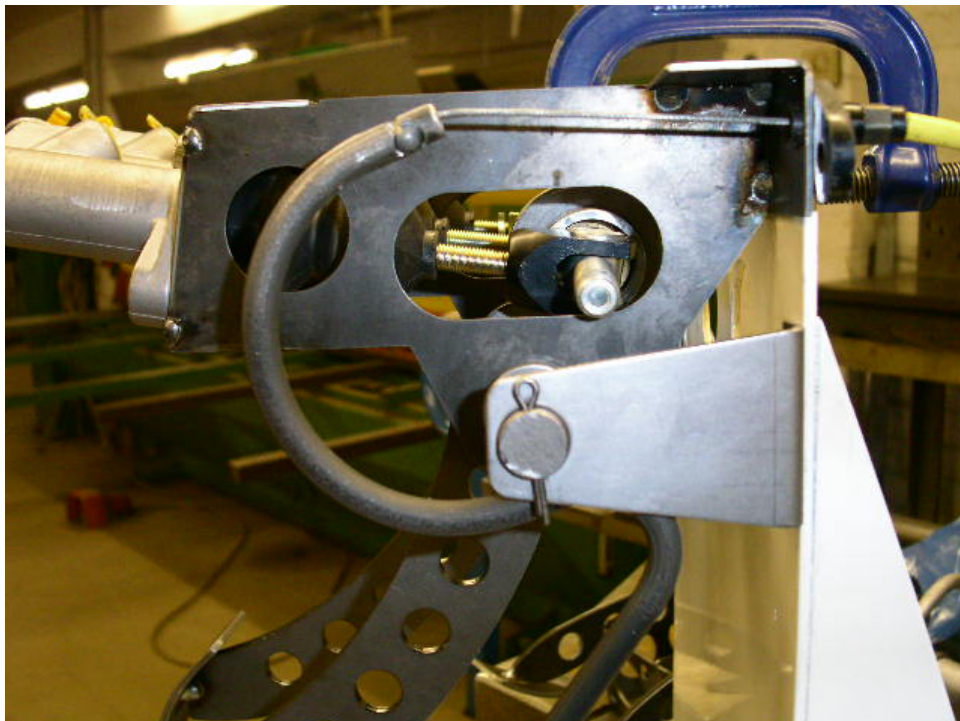
Slot the ball of the cable into the drilled hole in the pedal.

Pull the cable through so the ball is in the hole and the cable is in the slot. A jubilee clip can be used to clamp the end of the pedal so the cable can not come out.





Longlands, Uggmere Court Rd, Ramsey Heights, PE26 2RQ
Sales Office: 01487 812 301 Fax: 01487 814 580



Web: www.obp.uk.net Email: sales@obp.uk.net